

# Cushion Max™



- Cost-effective alternative to traditional PVC foam mats.
- Constructed of 100% Nitrile/PVC closed-cell foam to provide superior anti-fatigue properties.
- Diamond pattern surface is more than twice as durable as traditional PVC foam mats, helping to reduce slip and fall accidents.
- Ideal for use in warehouses, assembly lines, work stations and any dry working environment.

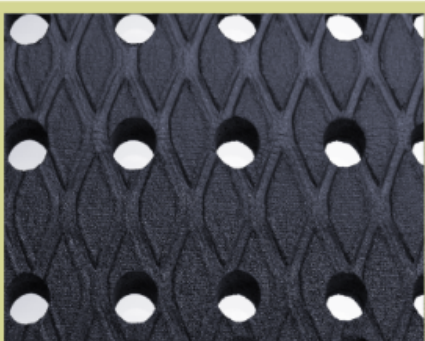
Standard Sizes:

2' x 3'

3' x 5'; 3' x 12'

4' x 6'

Custom Sizes: Up to 45'  
in 2', 3' and 4' widths



**With Holes**



**Without Holes**